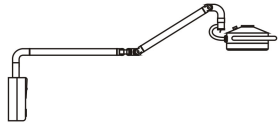


## Content

I Brief introduction.....	01
II Performance summary.....	01
III Main technical parameters.....	01
IV Security tips and symbol instructions....	02
V Working environment.....	03
VI Product interface.....	03
VII Usage.....	03
VIII Attentions.....	05
IX Failure judgment and eliminating methods.	06
X Bulb replacement.....	07
XI After-sales service.....	07
XII Transportation and storage condition....	08
XIII Electrical schematic diagram and components list.....	08
XIV Warranty card and maintenance card.....	12
XV Configuration list.....	13

Wall-mounted Medical Examination Light

# USER MANUAL



### I Brief introduction

It adopts 12pcs brand 3W LED bulbs as the light source, double switch control, and the brightness adjustable. The lamp head and arm rotate freely, multi-angle lighting. lean on the wall when not in use.

The product is mainly composed of lamp panel, power box, spring arm, hanging bracket. The diameter of lamp panel is 200mm, larger than the ordinary examination light, smaller than traditional LED shadowless lamp. Make up for small light spot, low illumination, short lighting depth of the examination lamp.

This product installed on the wall, easy to operate.

This product adopts wide voltage input, low voltage output power supply, stable and reliable performance. Suitable for clinic, dental, gynecology, medical beauty, and pet medical.

### II Performance summary

The design and production of this examination light strictly executes the first part of the safety requirements of medical electrical equipment GB9706.1-2007: general requirements which is guaranteed in safety.

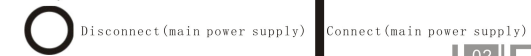
### III Main technical parameters

1. Input voltage: AC90~240V 50Hz~60Hz

2. Input power: ≤50VA
3. Power of bulb: 3W\*12
4. Color temperature: 5500±500K
5. Diameter of lamp holder: 200mm
6. Working distance: 700mm

### IV Security tips and symbol instructions

1. When the examination light is in using, you should always abide by the basic safety precautions in order to avoid fire, electric shock or the risk of injury.
2. Please read the instructions carefully, and operating according to the specifications and requirements.
3. Before clean the product, unplug the power line, and do not use liquid or spray cleaners.
4. Please don't use the cold light source near the water. Don't put anything on the power line of the examination light.
5. When replace the bulbs, you must turn off the power switch of the light source and unplug the power cord.
6. Maintenance should be performed by professionals.
7. The brightness of this examination light is very high, when you use, don't contact with eyes directly, in case of damage.
8. Symbol:



01

02

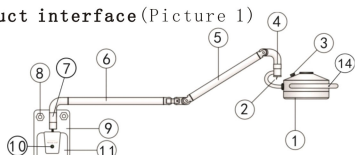
### V Working environment

Environment temperature: -5°C~40°C

Relative humidity: 35%~75%

Atmospheric pressure: 700hPa~1060hPa

### VI Product interface (Picture 1)



Picture 1

- ①Lamp holder ②Lamp switch ③Brightness adjusting knob  
④Decoration cover ⑤Lift arm ⑥Horizontal arm ⑦Rotation axis  
⑧Expansion screws ⑨Hanging board ⑩Indicator light  
⑪Power box ⑫Power switch ⑬Power cord interface  
⑭Handle

### VII Usage

1. Check before use

1) Open the package, check whether it is damaged or not.

2) Check whether the model, name and quantity are in keeping with "configuration list"; Please contact with factory or distributor in time to get properly resolved if you find something incorrect.

3) Read the instructions carefully and follow

the installation steps.

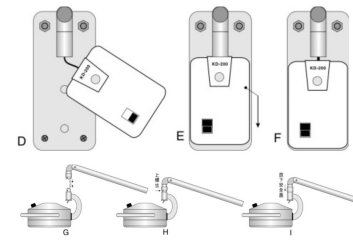
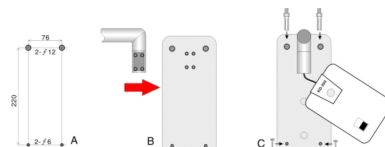
### 2. Installation

1) First positioning the four fixed holes in the Hanging board ⑨ on the wall, the holes are shown as Picture 2-A. The upper end is drilled with two embedded holes, depth of 110mm, the drill size must be φ12mm; The bottom end is drilled with two embedded holes, depth of 30mm, the drill size must be φ6mm, then load the expansion pipe.

2) Remove the four screws from the Rotation axis ⑦, connect with Hanging board ⑨, fix the screws, according to Picture 2-B.

3) Install the Hanging board ⑨ on the wall according to Picture 2-C, use two expansion screws to fix the upper end, use two self-tapping screws to fix the bottom end, then install the power box according to step 2-D, E, F.

4) Install the Decoration cover ④, connect the docking plug, to finish the whole steps according to 2-G, H, I



Picture 2



### 3. Usage

1) Connect the power cord with internet electric power supply and Power cord interface ⑬, turn on Power switch ⑫, the Indicator light ⑩ bright up; open the lamp switch ②, the lamp bright up, the examination light start to work.

2) Adjust the brightness control ③ could change the brightness level from zero to maximum.

3) Hold the handle ⑭ could control the height of lamp holder, rotate the lamp arm left and right around the Rotation axis ⑦.

4) Hold the handle ⑭, take the lamp holder support as a fulcrum, rotate the lamp holder left and right to change the lighting angle.

【Notice】 Take the joint between Lift arm ⑤ and Horizontal arm ⑥ as fulcrum, tuck the lamp against the wall when not in use.

### VIII Attentions

1. Please pull out the power plug before clean the lamp, do not use liquid spray to clean it.
2. When install the lamp, please assemble and reinforce it according to the instruction of the technical requirements.
3. Do not use the lamp near water.
4. The repair, installation and commissioning of the operation lamp should be performed by professionals.
5. Never put any item on the power line.
6. The old light bulb should be put into the waste barrel. Don't throw it carelessly.
7. The light intensity of illumination is higher, you should be cautious in use with your eyes.

### IX Failure judgment and eliminating methods (This link requires professional operation)

Failure phenomenon	Reason	Solution
Open the power switch, the indicator is not bright up	1. Power lines have no electricity	Connect to the circuit where there is electricity supply
	2. The power cord is not connected well	Reconnect the power cord
	3. The system faulty	Connect the after-sales department to get solved
Open the power switch, the indicator is bright, but the lamp is not bright up	1. The lamp switch is not turned on	Turn on the switch ②
	2. The brightness at the minimum position	Adjust the brightness adjustment knob ③ to the maximum.
	3. Poor contact with docking plug	Reconnect the 2-G

03

04

05

06

### X Bulb replacement

The lamp bulb is LED light source, the normal life up to 10000 hours, no need to replace normally. In case of any failure, please inform the manufacturer in time for processing.

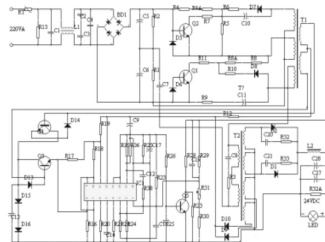
### XI After-sales service

- ◆The product warranty period is 18 months
- ◆During warranty period, Send or give us your warranty and purchase invoices, we will provide free maintenance service when you have quality problems.
- ◆Light bulbs are consumable accessories.
- ◆If you modified the function by yourself and then it does not work, is not covered under warranty.
- ◆If the marks on the product such like model, serial number, date of manufacture has been altered, deleted, or unidentifiable, will not provide free warranty service.
- ◆If moving falling, squeezing, soaking, moisture and other failures caused by human factors can not enjoy our free warranty service.
- ◆The production date shown on label, service life is 5 years, we provide lifetime maintenance.

### XII Transportation and storage condition

Environment temperature: -40°C~55°C  
Relative humidity: 30%~80%  
Atmospheric pressure: 500hpa~1060hpa

### XIII Electrical schematic diagram and components list



NO.	Material name	Specification	Quantity	Remark
1	Circuit board	7D1A	1	
2	Field-effect tube	SL20C20U	1	
3	Filter choke	220mH	1	
4	Inductance	470mH	1	
5	Capacitance	F103M/2KV	3	
6	Capacitance	22nj/T100V	1	
7	Capacitance	102M/2KV	1	
8	Electrolytic capacitor	50V/1uf	1	
9	Capacitance	222J/250V	1	
10	Capacitance	102J/100P	1	

11	Electrolytic capacitor	50V/4.7uf	3	
12	Electrolytic capacitor	50V/22uf	1	
13	Electrolytic capacitor	50V/47uf	1	
14	Electrolytic capacitor	50V/1000uf	2	
15	Electrolytic capacitor	250V/470uf	2	
16	Capacitance	22nj/T100V	1	
17	Capacitance	102M/2KV	1	
18	Electrolytic capacitor	50V/1uf	1	
19	Capacitance	222J/250V	1	
20	Capacitance	102J/100P	1	
21	Electrolytic capacitor	50V/4.7uf	3	
22	Electrolytic capacitor	50V/22uf	1	
23	Electrolytic capacitor	50V/47uf	1	
24	Electrolytic capacitor	50V/1000uf	2	
25	Electrolytic capacitor	250V/470uf	2	
26	CBB capacitor	400V/105J	1	
27	Filter capacitor	0.1uf	2	
28	Resistance	150K/0.25VA	1	

29	Resistance	15 Ω/0.25VA	2	
30	Resistance	120K Ω/0.25VA	1	
31	Resistance	12K Ω/0.25VA	1	
32	Resistance	10K Ω/0.25VA	1	
33	Resistance	1K Ω/0.25VA	1	
34	Resistance	22K Ω/0.25VA	1	
35	Resistance	15K Ω/0.25VA	1	
36	Resistance	5.6K Ω/0.25VA	2	
37	Resistance	560 Ω/0.25VA	1	
38	Resistance	1.2K Ω/0.25VA	1	
39	Resistance	3.9K Ω/0.25VA	1	
40	Resistance	680K Ω/0.25VA	1	
41	Resistance	1.5K Ω/0.25VA	1	
42	Resistance	100K Ω/0.25VA	1	
43	Resistance	4.7K Ω/0.25VA	1	
44	Resistance	220 Ω/0.25VA	1	
45	Resistance	150K Ω/0.25VA	5	
46	Resistance	2 Ω/0.25VA	2	
47	Resistance	22K Ω/0.25VA	2	
48	Resistance	24 Ω/0.25VA	2	
49	Resistance	3.9K Ω/0.25VA	2	
50	Resistance	100 Ω/3VA	1	
51	Resistance	680 Ω/3VA	1	
52	Diode	F107	6	
53	Diode	1N4752	2	
54	Diode	1N4148	2	
55	Audion	1815	3	
56	Thermistor	5D-15	1	
57	Piezoresistor	10D471K	1	

07

08

09

10

58	Integrated circuit	LM494	1	
59	Rectifier bridge	KBUR10	1	
60	Bulb	LED	54	
61	Power socket		1	
62	Power line		1	
63	Fuse holder		2	
64	Power switch		1	

Any products may be updated or improved. The change of circuit or element specifications of the product will not with prior notice.

### XIV Warranty card and maintenance card

#### Warranty card

Company name:	
Address	Phone No.
Product name	Model
Serial Numbe	Manufacture date
Sale date	
Fault description:	
Remark: The warranty of our products is 18 months since the release date.	

(Please fill in the form truthfully, cut it according to the dotted line and send it back to our company, thank you for your cooperation)

#### Maintenance card

Company name:	
Address	Phone No.
Product name	Model
Serial Numbe	Manufacture date
Sale date	
Fault description:	
Remark: You can enjoy 30 percent off for the maintenance services even if you use this card over the quality assurance period.	

11

12

### XV Configuration list

No.	Name	Specification	Quantity	Remark
1	Auxiliary light for operation	36W	1	
2	Spring arm	Wall-mounted type	1	
3	Hanging board	25cm*11cm	1	
4	Power line	3*0.75 m*2.5M	1	
5	Expansion screw	M10*100 built-in	2	
6	Trim cover for expansion screw	M10, opposite 17, white, hexagon nut	2	
7	Tool	□ No. 4 allen wrench □ No. 3 allen wrench	2	
8	Decoration cover	Φ53	1	
9	User manual	A4	1	
10	Quality certificate	---	1	
11				
12				
13				

Notice: Please check the goods according to the configuration list within 3 days after receiving the goods.

No. 1 edition on July 28, 2018

13